

ROFI RAPID TENT - 600 SERIES

- an inflatable tent designed for high mobility and comfort

- Breathable, but water proof fabrics, or PVC fabric
- High comfort
- High pressure structure– not influenced by temperature changes
- Multiple use
- Simple logistics



Field Hospital
Accommodation
First Aid Station
Staff/ office tent
Recreation area

ROFI RAPID TENT - 600 SERIES

– A preferred solution when low weight, rapid deployment and high comfort are of importance.

Key features:

- Climate: A1 - A3, B1 - B2, C0 - C1 in accordance with STANAG 2895
- Assembly time: approx 10 minutes by 2 persons
- Lightweight one side special-coated fabrics water repellent and fungicide finish, oil and dirt repellent finish, > 1000 mm water column
- Reduced risk of humidity inside
- Doors: 1,10 x 2,10 meter with replaceable zippers
- Detachable doorstep
- Connectible door-door to next tent delivered as standard
- Four Air-Inlet/service openings Ø 450 mm
- Flexible inflatable structure with 6-8 BAR high pressure 4" arches
- Inflatable structure not influenced by temperature changes
- Simple logistics
- Horizontal tubes gives even more stability and better stretch support on the floor – increased user comfort.



AREA OF USE:

- Field Hospital
- Accommodation
- Recreation area
- First Aid Station
- Staff/ office tent
- Workshop

Our new range of inflatable tents ROFI RAPID 600-series is designed based on user requirements asking for lightweight soft shelters that may easily be deployed with a minimum of logistic support and within the shortest possible time. The lightweight design makes the ROFI RAPID 600-series especially suitable for rapid response units and groups that need to maintain a high mobility. With 6 meters width the ROFI RAPID 600-series is specially designed to accommodate hospital beds.

At present we may offer following models with two or four entrances of ROFI RAPID 600-series:

ROFI RAPID 610 60m²
6 meters with, 10 meters length

ROFI RAPID 608
6 meters with, 8 meters length

ROFI 606
6 meters with, 6 meters length



ADVANTAGES:

- Lightweight breathable fabric preventing interior humidity and avoiding water penetrating from outside can also be delivered in PVC fabric upon request.
- Low weight and waterproof
- Single point air filling with compressor or high pressurized air-bottle
- Quick setup time, approx 10 minutes by two persons
- Simple erection – no special tools required
- Simple maintenance in field operations
- Three layer windows allowing natural ventilation
- Curtains inside for easy sun protection operated from inside.
- Roof vents for increased natural ventilation
- Integrated PVC- anti-skid flooring protecting against surface water and reptiles/ bugs
- Option on flysheet – for added sun protection
- Option on solid doors

The tent may be easily split in sections by means of separation walls, creating joint accommodation areas for teams/ groups. The tent is fully integrated, meaning that sidewalls, roof, gables and floor are in one piece. The inflatable structure has high- pressure 4" arches, making the tent unaffected to temperature fluctuations. Tent design and anchoring system provide high stability and wind resistance. The ROFI RAPID 600-series tents are equipped with air- inlet and service openings, enabling placement of AC and heater. Inside the tent there are possibilities of mounting equipment such as lighting, and personal effects.

For best possible ventilation, we introduce a new type of fabric, extremely resistant to water, with a water column of 1000 mm, but nevertheless with a breathing characteristic that ensures the best possible comfort in tropic areas. Ventilation through three layer windows with curtain operated from inside adds further to the comfort level when exposed to extreme heat.

ROFI RAPID

rapid deployable emergency field hospital

Simple logistics and rapid deployment make ROFI RAPID 600-series an excellent choice for emergency response units in need of high mobility in their field operations. The ROFI RAPID 600-series may be operated by one or two persons, easily transported in the back of a car or on a trailer.

The shape of the inflatable structure provide sufficient space for placing hospital beds across of each other, leaving a walkway in the middle wide enough to operate hospital beds for easy access to the patients.

For use as examination room or operation theatre, the ROFI RAPID 600-series provides sufficient work space for the medical staff performing their duties. The tent may be easily split in sections by means of separation walls, creating treatment- and functions areas necessary in a Field Hospital concept.

The tent is designed to assure a clean environment. Use of air distribution hose in the roof provides evenly distribution of the cooled or heated air throughout the tent.

ROFI RAPID

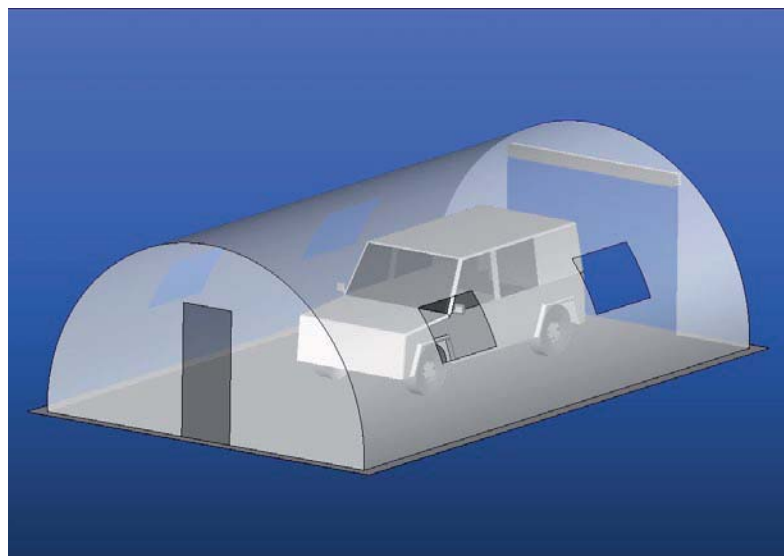
Accommodation

The simple logistics and rapid deployment make our ROFI RAPID 600-series an excellent choice for personnel that need high mobility in their field operations. The ROFI RAPID tent may be operated by two persons, easily transported in the back of a van or on a trailer.

The shape and size of the arches provide sufficient space for placing field beds or bunk beds across of each other, leaving a spacious walkway in the middle for easy access.

When deployed in field operations for longer periods, we recommend providing each person with cabins/ room separation for increased privacy.

Details like easy fixation of accessories such as separation walls, inner cabins, lighting, etc, increase the comfort level for the users.



ISO 9001 Certified



Certificate no. XXX

ROFI Industrier as represents more than 60 years of experience within the textile industry. A comprehensive integration with our suppliers and partners enable us to meet the requirements for progressive development, system solutions and a stock-hold of selected items. We continuously maintain our certificate covering quality assurance/control.

REFERENCES:

ROFI is an experienced supplier of tents to UN-agencies, NGOs and defense customers, with success in introducing new tent models meeting customer requirements and changing conditions worldwide.

ROFI RAPID 600-series is a proven design with new technologies being introduced to the market.

SHIPPING INFORMATION



Packed in transport cover One large and two small pcs.

ROFI RAPID 610 6/2 size 60 m²
L:160xW:120xH:90 cm = 1,53m³ / 238 kg

ROFI RAPID TENT ACCESSORIES



Mosquito separation wall



Flysheet

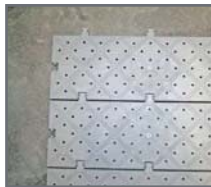


Compressor

ROFI FIELD EQUIPMENT



ROFI AC/Heaters



ROFI Floor



ROFI Folding chair/table



ROFI Lighting



ROFI Lighting



ROFI Camp light



ROFI Camp light



ROFI Cabin light



ROFI Field bed



ROFI Disco bed



ROFI Toilet/Shower tent



Water heater

Specifications may be altered without notice due to progressive product development.


Normeca^A

SUPPLIER OF MOBILE HOSPITALS

Mailandvn 12, P.O. Box 404, 1470 Lorenskog _ Norway

Tlf.: +47 67 92 76 00 - Fax: +47 67 92 76 92

Mail: post@normeca.no - Web: www.normeca.no